

FEATURES

- Square module part, with magnet for easy installation
- 12VDC Input with 1-10V dimming
- With quick connector
- Remote Control



On/Off Control



Detection Area



Stand-by dimming level



Stand-by period



Hold Time



IP Rating



TECHNICAL DATA

Microwave Information

Frequency	5.8GHz±75MHz
Microwave Power	0.3mW
Installation Height	2.5-5m/8.20-16.40ft Max. Ceiling Mounted
Detection Distance	Radius 4-8m/13.12-26.24ft Ceiling Mounted
Detection Angle	Ceiling Mounted 360° Wall Mounted <150°
Warranty	5 Years

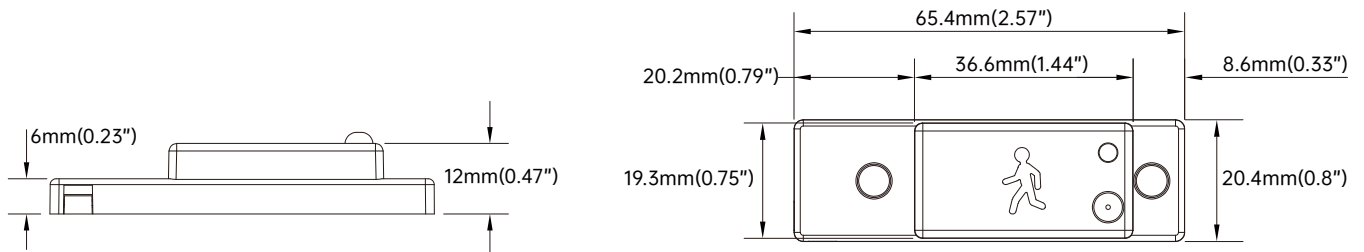
Electrical Specifications

Input Range	10.5-15VDC (typical +12V >50mA)
Operating Current	<30mA
Stand-by power	<0.5W
Output control	ON/OFF 0-10V DIM
Working Temp	-40°C~+70°C
Connection	White 12V, Gray GND/DIM-, Purple DIM+

Sensor Parameter

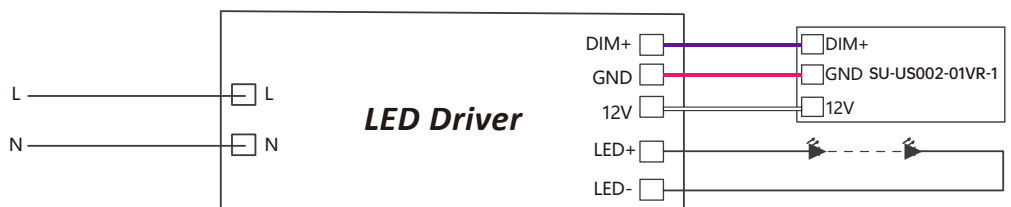
Warming-up Period	About 10S
Control Device	HD06R Remote Control
Detection Area	25%/50%/75%/100%
Holdtime	5s/30s/1min/3min/5min/10min/20min/30min
Daylight Threshold	2Lux/10Lux/30Lux/50Lux/80Lux/120Lux/200Lux/250Lux/300Lux/350Lux/400Lux/Disable
Standby Period	0s/10s/30s/1min/5min/10min/30min/60min/+∞
Standby Dim Level	10%/20%/30%/50%
Remote +-Button Dimming	Sensor Mode:60%-100% ON/OFF Mode: 10%-100%

DIMENSIONS

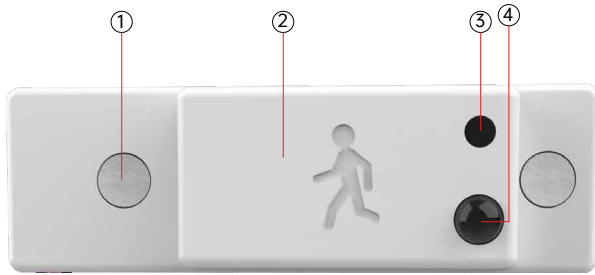


WIRING DIAGRAM

- █ VCC
- █ GND
- █ DIM+



MECHANICAL STRUCTURE



- ① Magnet for installation
- ② Microwave Module
- ③ Daylight Sensor
- ④ IR Receiver

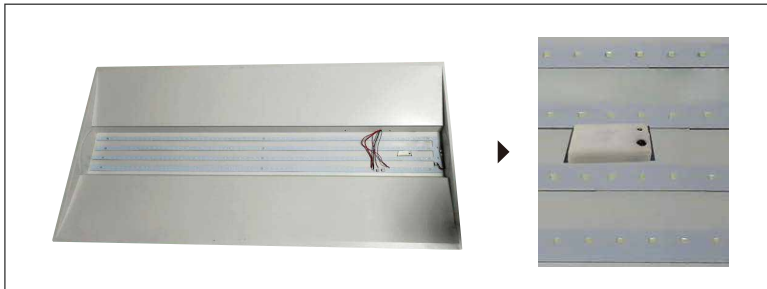
INSTALLATION METHOD

Suitable fixtures

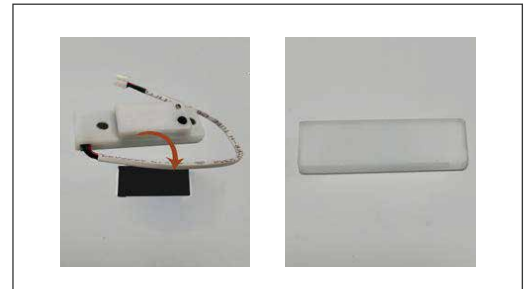
Ceiling light, troffer, triproof light, batten light, linear light, LED tube and etc.



Front



Back

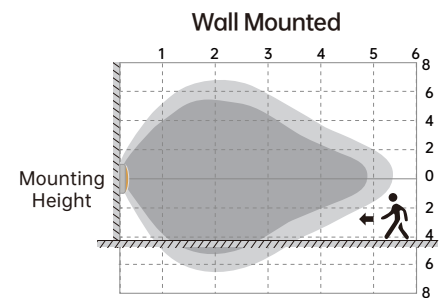
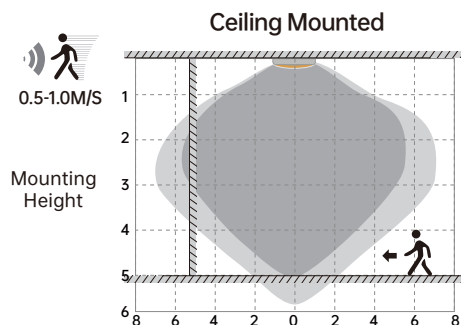


DETECTION COVERAGE

Highest mounting height is 5m

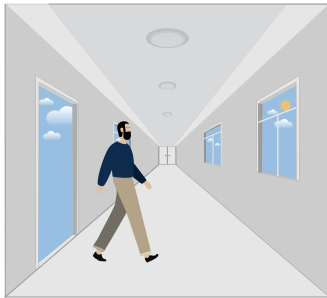
This figure indicates the maximum distance at the highest mounting height with 100% sensitivity.

- Well Detected Area
- Possibly Detected Area

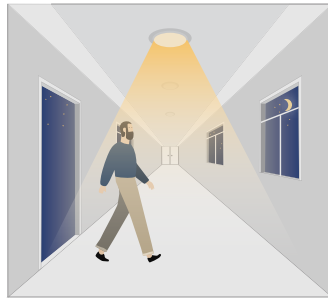


PERFORMANCE

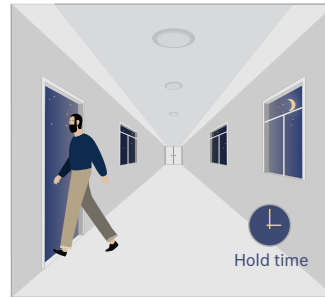
1. Automatically ON/OFF function



With sufficient daylight, even when motion detected, light remains OFF.



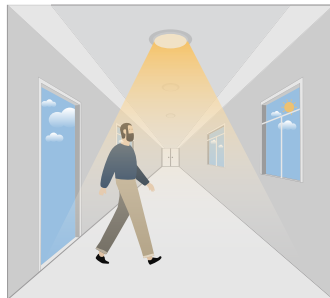
With insufficient daylight, the sensor turns light ON when motion gets detected.



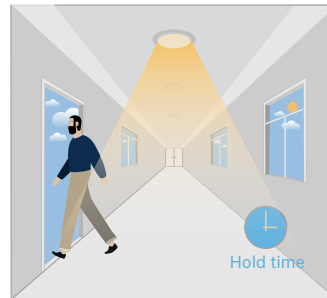
The sensor turns OFF light automatically after the holdtime when there's no motion detected.

2. Daylight Disable

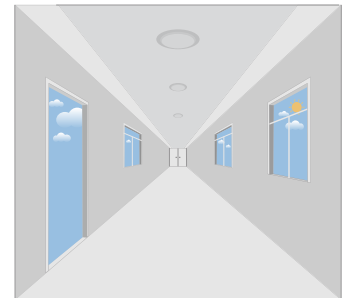
When daylight threshold is preset as "disable", the sensor turns light ON when motion gets detected, and OFF after holdtime.



The sensor turns light ON when motion gets detected.

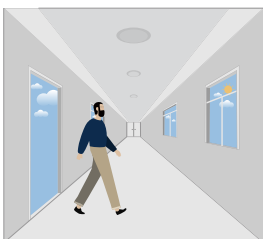


The sensor keeps light ON for holdtime period after motion leaves.

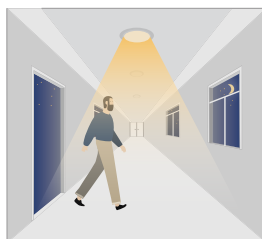


The sensor turns OFF light automatically after the holdtime.

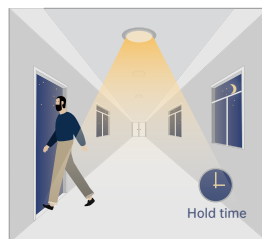
3. With Daylight Threshold



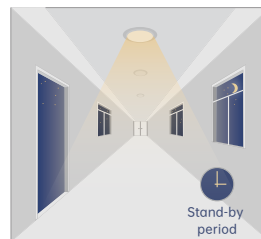
With sufficient daylight, the sensor keeps light OFF even motion gets detected



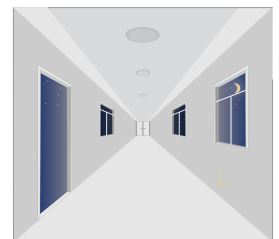
With insufficient daylight, the sensor turns light ON when motion gets detected



After there' s no motion detected, the sensor keeps light ON 100% for holdtime.



After holdtime, sensor dims light to standby dimming level for standby period. If the standby period has been set as 0s, sensor turns light OFF automatically after holdtime.



The sensor turns OFF light automatically after the standby period when there' s no motion detected.

FACTORY SETTING

1. Detection Area - 100%
2. Holdtime - 5S
3. Daylight Threshold - disable
4. Standby Period - 0S
5. Standby Dimming Level - 10%



Attention

1. The sensor should be installed by qualified electrician and ensure power is OFF before installation.
2. Please read the instruction carefully before using the product and keep it well for other users to read any time.
3. We reserve the right to modify any incorrect text, image and technical parameters.
4. Any unauthorized modification is forbidden. Otherwise all guarantees will be immediately invalid.
5. Product could be optimized without prior notice.

APPLICATION NOTES

1. Suitable for indoor application, half/completely outdoor environment conditions might be captured as moving signals to trigger the sensor.
2. Suitable for ceiling mount installation, adjust sensitivity properly if it's installed on side-wall because it gets more sensitive.
3. Adjust sensitivity properly when the sensor is applied in small/narrow/metal-built/with metal spaces.
4. Microwave sensor can't be placed under/inside metal shell; Microwave module must directly face the detection area with edge lower than light fixture.
5. Keep the sensor away from vibration equipments, air-conditioning outlets, smoke extractors alike conditions to avoid unwanted trigger.
6. Keep the sensor module away from AC input and DC output to avoid high/low frequency signal interference.
7. At least 2m/6.5ft distance between microwave sensors; 1.5m/4.9ft between the sensor and other wireless devices such as routers to avoid possible radio interference.
8. Daylight testing delivered in bright day without shadow or specially designed lampshade or lens.
9. Dimming performance differs when connected to different drivers; If the driver can't completely turn OFF, sensor can't either.
10. Input power voltage must be stable with float less than 10%.
11. The first time powered ON sensor, light will be ON 100% for about 10S then dims to standby level or OFF.
12. Distance detection is delivered by testing person about 165cm in open area as reference, the result differs by size and speed of moving objects, mounting height and real-life situation.