



Description

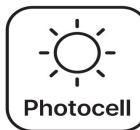
NETWORK's LED Area light is perfect for Area Lighting and good for medium-height parking lot poles and new construction applications in industrial outdoor applications, such as parking lots, roadways, and outdoor applications. Photocell and motion sensor available. A 3 CCT & 5 Wattage DIP switch helps the customer to save SKUs. Innovative optic swap capability accomplished by one integrated lens.

Application

- Parking lots
- Roadways
- Outdoor applications

Certificate

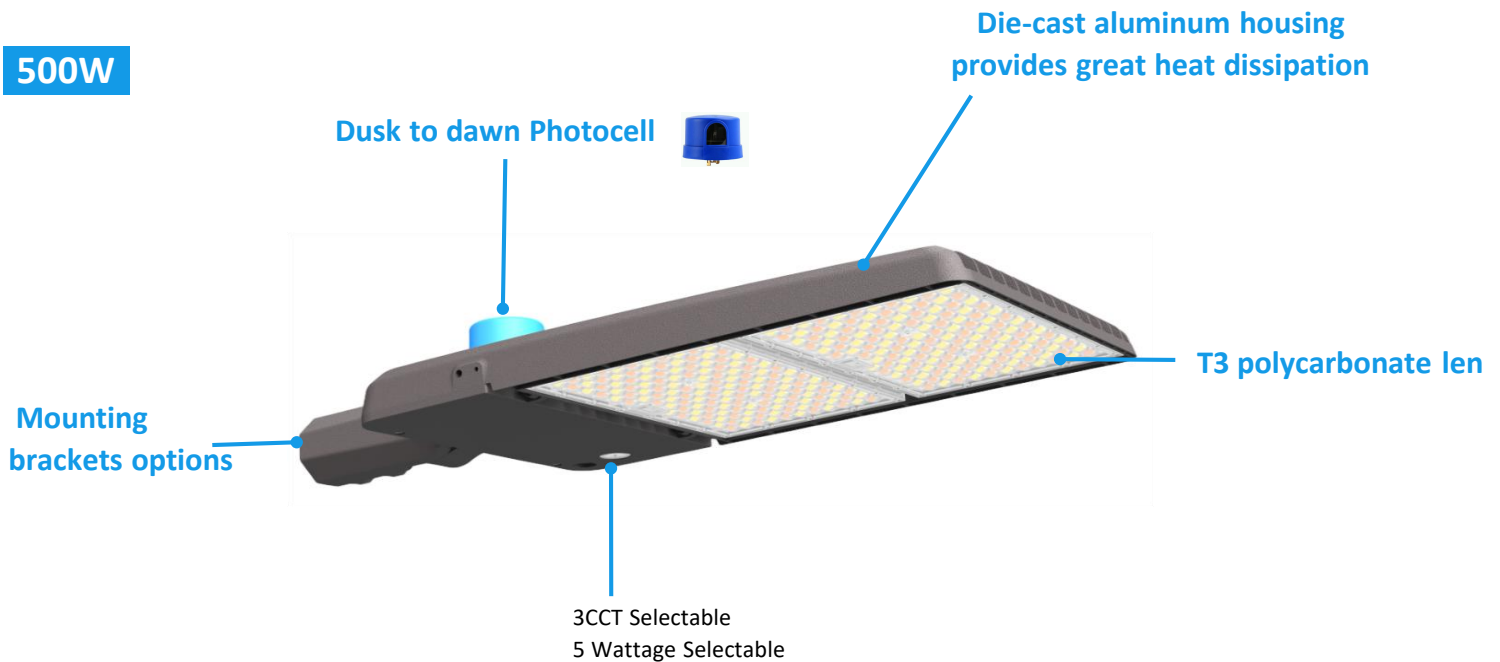
- UL
- DLC



Key Features

- Innovative optic swap capability accomplished by one integrated lens (T2/T3/T4).
- Latch design for quick, tool-free lens change.
- 3CCT(4000/5000/5700K) and 5 Wattages Selectable offer SKU reduction.
- 7 kinds of mounting brackets available (SF, DI, UDI, SR, YM, TR, U).
- Plug-in and Zhaga socket microwave motion sensor available.
- Photocell dusk to dawn function available.
- AC120-277V for options.

500W



Performance Summary

Model NO. #	Watts	CCT	LPW	Lumens(±10%)	Voltage	DIM	CRI	Beam Angle
SU-SB-500W-CCT-G1	500/450/400/350/300W Selectable	CCT Selectable 4000K 5000K 5700K	163 lm/W	76393lm@500W	AC120-277V	0-10V	CRI>80	T3, T4 (Default T3)

Remarks: 1. All above efficacy and lumens are subject to CRI>80 @4000K T3, please check IES files for accurate data.

2. SU-SB-500W-CCT-G1, xC: Use any character to represent the shell color. The default null value is brown, black is represented by BL, and white by WH,GX for commercial, can be any two characters or blank.

3. CCT & Power Selectable models ship preset at the highest CCT and the highest wattage. All models ship preset at T3 optics.


Performance

- LED Type: SMD2835
- Power Factor: ≥0.90
- Frequency: 50/60 Hz
- IP Rating: IP65
- THD: 20%
- Surge Protection: L/N 6KV, L/N-P 6KV
- Operating Temp.: -40°F to 122°F (-40°C to +50°C)
- Storage Temp.: -40°F to 158°F (-40°C to +70°C)



Construction

- Lens: Polycarbonate
- Housing: Die-cast Aluminum
- Finish: Bronze(Standard)

Mounting Bracket (Sold separately)

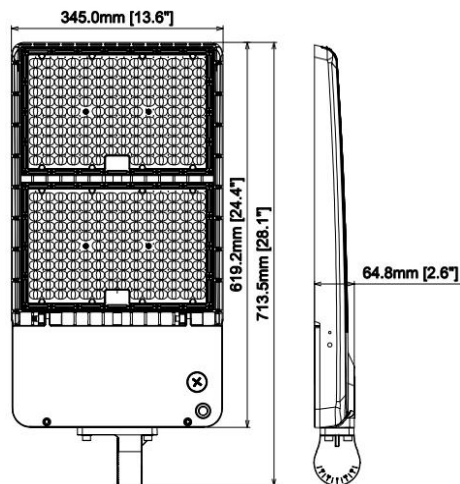
Picture	Item #	Description
	SU-SB-SF-G1	Mounting Bracket, Slip Fitter(SF), Bronze finish

Accessories (Sold separately)

Picture	Item #	Description
	SU-SB-PHOTO	Ojun 3 Pin Photocell
	SU-SB-GS-G1	Glare shield

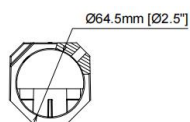
Product Dimension

(unit: mm & inch)



SU-SB-500W-CCT-G1

Dimension for Mounting Bracket



SU-SB-SF-G1

Packing Info. (Factory Default)

Fixture with mounting base

Product Size(inch & mm)	Net Weight (kg)	Gross Weight (kg)	Carton Size(mm)	Q'ty/CTN (PCS)	20GP (PCS)	40HQ (PCS)
SU-SB-500W-CCT-G1 28.1"*13.6"*2.6" 713.5*345*64.8mm	7.7	8.83	772×450×130mm	1	560	1350

(Mounting Bracket only)

Model	Product Weight (kg)		Package Weight (kg)		Carton Size(mm)	Q'ty/BOX (PCS)	Q'ty/CTN (PCS)	20GP (PCS)	40HQ (PCS)
	N.W./PC	G.W./PC	N.W./CTN	G.W./CTN					
SU-SB-SF-G1	0.56	N/A	5.60	6.26	461×192×200mm	1	10	15840	35640