



## Description

NETWORK's new linear high bay light is ideal for industrial lighting, warehouses, supermarkets, gymnasiums, and production assembly areas to meet different beam angle needs. Replace existing HID high bay light. Solid state lighting technology for long life, low maintenance, and high efficiency.

## Application

- Warehouses
- Garage
- Industrial
- Gymnasiums
- Manufacturing

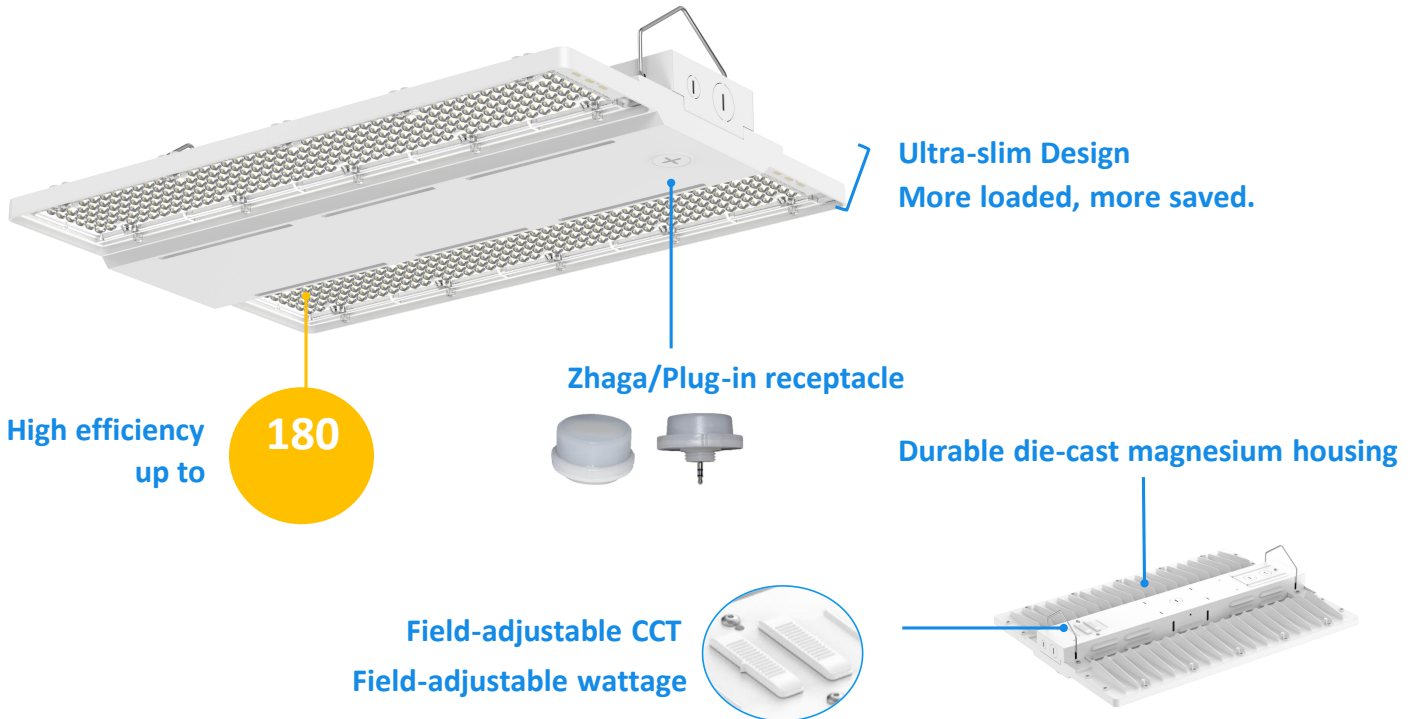
## Certificate

- UL
- DLC



## Key Features

- High efficacy up to 180lm/W.
- 3CCT(3500/4000/5000K) and 4 Wattages Selectable offer SKU reduction.
- Low glare with UGR<15.
- Die-cast magnesium housing provides good heat dissipation and a durable lifetime.
- The driver box features a ventilated window design with heat dissipation holes, enhancing convective cooling.
- Multiple installation ways of Chain Mount, Surface Mount, and Pendant Mount.
- Includes Plug-in receptacle as standard for easy connection.
- Microwave motion sensor and PIR sensor available.
- AC120-277V .



## Performance Summary

Model NO. #	Size	Watts	3 CCT	LPW	Lumens(±10%)	Voltage	DIM	CRI	Beam Angle
SU-LHB-220W-CCT-G2	1.4FT	220/200/180/160W Selectable	3CCT Selectable 3000K 3500K 4000K 5000K 5700K	180lm/W	39600LM @220W	AC120-277V AC120-347V	0-10V	>80	90°

Remarks: 1. All above efficacy and lumens are subject to CRI>80 @4000K white, please check IES files for accurate data.

2.SU-LHB-220W-CCT-G2, xC: Use any character to represent the shell color. The default null value is brown, black is represented by BL, and white by WH,GX for commercial, can be any two characters or blank.

3. Factory default settings: Max wattage, 5000K.

## Performance

- LED Type: SMD2835
- Frequency: 50/60HZ
- THD: <20%
- Power Factor: ≥0.90
- IP Rating: IP20
- Operating Temp.: -40°F to 131°F (-40°C to +50°C)
- Surge Protection: L/N 6KV, L/N-P 6KV

## Construction

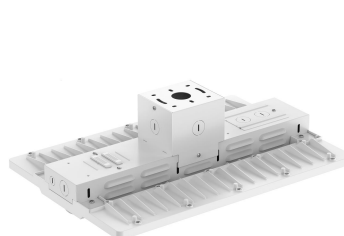
- Lens: Polycarbonate
- Housing: Die-cast Magnesium
- Driver Box: SPCC
- Finish: White (Standard), Custom finishes available

## Mounting

- Chain Mount (Standard)
- Surface Mount
- Pendant Mount



Chain Mount



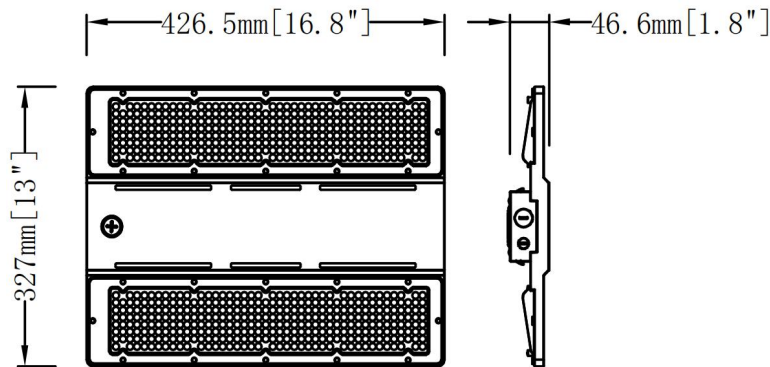
Surface Mount



Pendant Mount

## Product Dimension

(unit: mm & inch)



**SU-LHB-220W-CCT-G2**

## Package Info.

Product Size(mm&inch)	Net Weight(KG)	Gross Weight(KG)	Carton Size(mm&inch)	Q'ty/CTN (PCS)	20GP (PCS)	40HQ (PCS)
<b>SU-LHB-220W-CCT-G2</b> 16.8"*13"*1.8" 426.5*327*46.6mm	2.30	10.93	439*220*342mm 17.28"*8.66"*13.46"	4	3120	7420