



**P/N: SU-SB-150WLC-40/50/57K-G2**

Note:

SU= Company name;

SB = Product series, LED Shoebox Light;

150W= Rating Power;

AL=A can be referred to selectable lens, blank for  
TYPE III / TYPE IV / TYPE V selectable

C=Can be referred to housing color, blank for brown

40/50/57K=Can be referred to selectable CCT

4000K/5000K/5700K

G2=Can be referred to LED Shoebox Light series

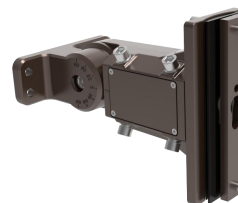
**ADVANTAGE**

- UL cUL DLC 5.1 premium certificate.
- Input voltage 120-277VAC.
- Output constant current lever can be adjusted through output cable with 0-10V.
- No UV or IR in the beam.
- Easy to install and operate.
- Energy saving, long lifespan.
- Light is soft and uniform, safe to eyes.
- Instant start, NO flickering, NO humming.
- Green and eco-friendly without mercury.

**APPLICATION**

- Outdoor basketball courts, Tennis courts, Badminton courts, Soccer fields.
- School playgrounds, Stadiums, Community leisure plazas.
- Road lamps.
- Outdoor parking lots.

**Universal bracket (A&D)**



## SPECIFICATIONS

<b>OPTICAL</b>	Input Power (Tolerance : ±10%)	70W/100W/150W (Wattage Selectable )		
	Color Temperature(Color Tunable)	4000K	5000K	5700K
	Lumen (Tolerance : ±10%) TYPE III	24000 LM	24750 LM	24000 LM
	Lumen (Tolerance : ±10%) TYPE IV	25500 LM	26250 LM	25500 LM
	Lumen (Tolerance : ±10%) TYPE V	24000 LM	24750 LM	24000 LM
	Efficacy (Tolerance : ±3%) TYPE III	160 LM/W	165 LM/W	160 LM/W
	Efficacy (Tolerance : ±3%) TYPE IV	170 LM/W	175 LM/W	170 LM/W
	Efficacy (Tolerance : ±3%) TYPE V	160 LM/W	165 LM/W	160 LM/W
	CRI	>70		
	Color Consistency	<7 Steps (or <7 SDCM)		
	BUG	B4-U0-G4	B4-U0-G4	B4-U0-G4
	Distribution Pattern	Type III	TYPE IV	TYPE V
	Beam Angle (50%) (Tolerance :	155*80 Degree	155*120 Degree	155*145 Degree
<b>ELECTRICAL</b>	Input Voltage and Frequency	120-277VAC, 50/60Hz		
	PF (Tolerance : -3%)	≥0.9		
	THD (Tolerance : +5%)	≤20%		
	Flicker Percent	<5%		
	Driver Brand	SOSEN		
	Driver Model	SS-160NH-E260BHB		
	Driver Surge protection	L/N-PE: 6kV, L-N: 6kV		
	Dimming	0-10V dimming standard		
	Sensor Type	Occupancy Sensor, Exterior Photocell, Integral Sensor Receptacle, Photocell		
	Optional Accessory	Photocell & Daylight Harvesting Sensor, A&D Universal Bracket		
	<b>MATERIALS</b>	LED Brand	Lumileds	
LED Type		2835		
LED QTY		500 PCS		
Housing		Die-cast aluminum		
Housing Color		Brown, or Customized		
EPA		1.2 ft²		
Waterproof Rating		WET (IP65)		
<b>OTHERS</b>	Operating Temperature	-40°C TO 50°C		
	Storage Temperature	-40°C TO 90°C		
	Operating Humidity	10% - 90% RH		
	Storage Humidity	5% - 95% RH		
	Warranty	5 years		

## LIGHT DISTRIBUTION TESTING PARAMETERS < Type II >

### Luminaire Property

Luminaire Manufacturer:

Voltage: 120.8 V

Power: 160.69 W

Current: 1.332 A

Power Factor: 0.999

### Photometric Results

IES Classification: Type IV

Total Rated Lamp Lumens: 27067.7 lm

Efficiency: 100%

Upward Ratio: 0%

Central Intensity: 6027.38 cd

Pos of Max. Intensity: H22.5 V74

Longitudinal Classification: Medium

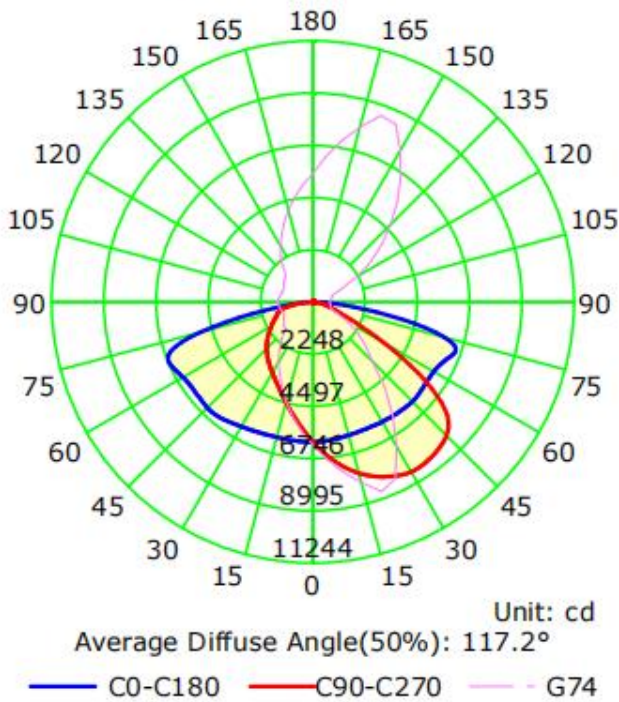
Measurement Flux: 27067.7 lm

Downward Ratio: 100%

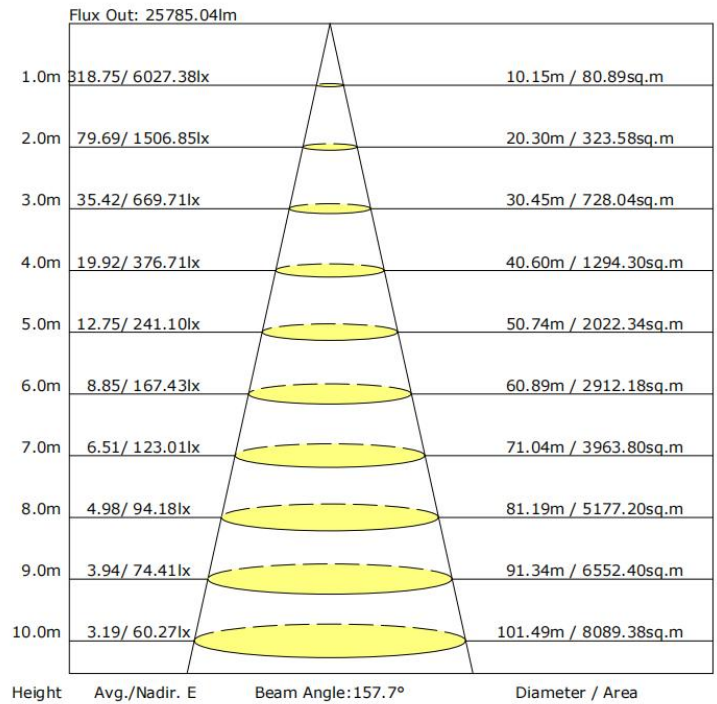
Luminaire Efficacy Rating (LER): 168.50

Max. Intensity: 8995.33 cd

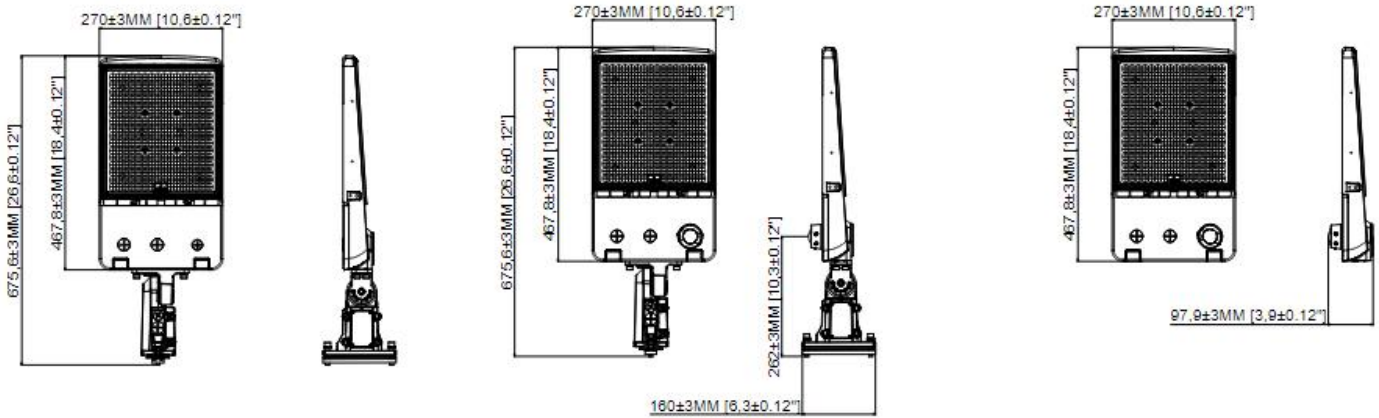
Luminous Intensity Distribution Curve



The Average Illuminance Effective Figure



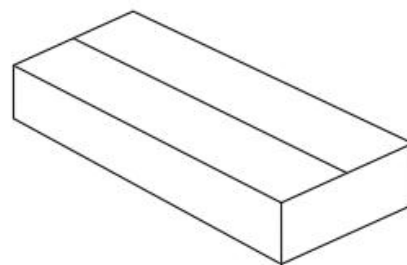
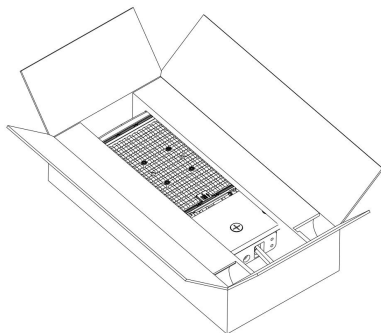
DIMENSIONS



PACKAGE

Bracket Type	Carton Size	Qty / Carton	Net Weight / Carton	Gross Weight / Carton
A&D	720*320*143mm [28.45*12.6*5.65inch]	1 PC	4.81kg [10.60 LBS]	5.69kg [12.54 LBS]
NO BRACKET	620*320*143mm [24.5*12.6*5.65inch]	1 PC	3.94kg [8.69 LBS]	4.93kg [10.87 LBS]

Tolerance of Carton Size: ±15 mm [±0.59 inch], Tolerance of Weight: ±10%.



## NOTICE FOR USER

- Please turn off power before install or change assembly parts.
- The input voltage and lamps should be matched, after connecting the power line, Please make sure the wiring section is insulated.
- No-professionals, must not install and disassemble the lamps.

## TROUBLE SHOOTINGS

<b>Troubles</b>	<b>Check points</b>
Flickering of the light	Turn off the power and turn on again in 3 minutes. If same phenomena occur, then call agencies.
Out of working	Please check the connection.