



DESCRIPTION

This series of products is a high - bay sensor, with an installation height $\leq 12\text{m}$, and is suitable for indoor and outdoor spaces such as warehouses, factories, and parking lots. With an IP65 waterproof rating, it can effectively resist dust intrusion and low - pressure water spray, and can operate stably whether in outdoor rain or indoor humid environments.

FEATURES

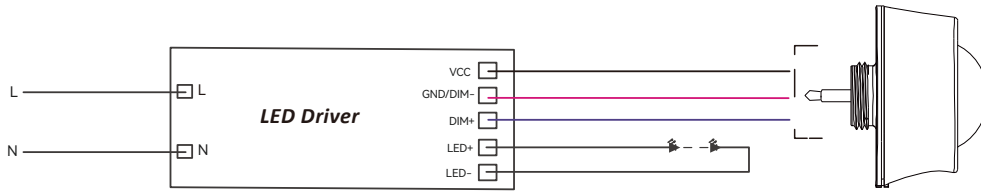
- 12 VDC, 0 - 10V Dimming
- Remote control , APP control for BLE version.
- With Daylight Harvesting and Photocell Function.
- ONE for ALL Installations Partnering With Different Receptacles & Brackets.
- UFO high bay, Linear high bay, area light



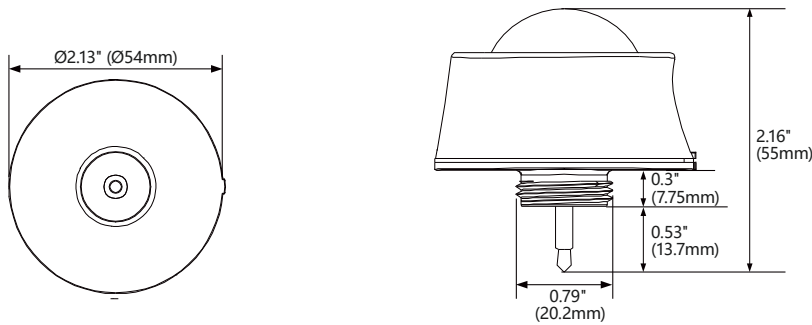
SPECIFICATIONS

Input Voltage	DC 12-24V
Input Current	<10mA (Regular-Version) <20mA (Bluetooth-Version)
Stand-by Power	DC 12V @ < 0.5W
Control Method	DIM 0-10V
Detection Angle	Ceiling-mounted: 360°, Wall-mounted: $\leq 120^\circ$ (Fersnel Lens)
Mounting Height	12m(39ft) Max.
Detection Range	Radius: 3-7m (9.84 - 22.97ft)
Control Device	HSE WISE APP
Bluetooth Transmit	25m 170.60ft
Radio Frequency	2.4GHz (2402~2480MHz)
Bluetooth Version	5.2
Dim level	Min Dim Level: 0% - 100% (The minimum value can be set in the zone settings panel)
Detection Area	High / Medium / Low
Max Dim	1%-100% Continuously Adjustable
Hold Time	5s/30s/1 min-120 min (Min Hold Time 5s, Adjustment Range 1 min)
Stanby Dimming Level	1% - 100% (Adjustment Range 1%)
Standby Period	0s/5s/30s/1 min to 120min (Adjustment Range 1 min) / ∞
Daylight Threshold	Disable 50Lux - 2000Lux (Adjustment Range 50Lux)
Daylight Harvesting	Function supported, please follow steps in "Performance" part to activate it.
Automatically ON/OFF (Photocell)	Function supported, please follow steps in "Performance" part to activate it.
Working Temp	-25 °C to +60 °C
IP Rating	IP65

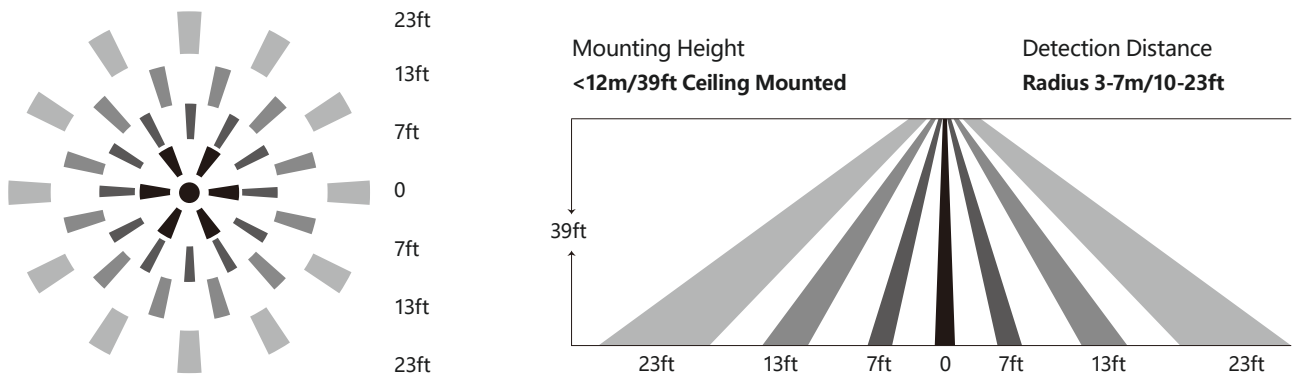
WIRING



DIMENSIONS



DETECTION COVERAGE



PERFORMANCE

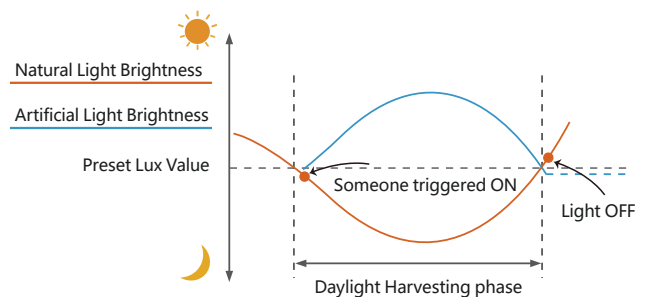
1. Daylight Harvesting

Please follow below setting steps to perform this function:

1. Stay in SENSOR MODE
2. STANDBY PERIOD as 0S
3. DAYLIGHT as any of 50Lux - 2000Lux (Adjustment Range 50Lux).
4. Press DAYLIGHT HARVESTING button to ON



HSE WISE APP Control





When ambient brightness is lower than preset lux level, Someone triggered ON light and keep dimming according to the change of the ambient brightness; when outside is getting darker, the inside will be brighter, and brighter darker.

Light OFF when ambient brightness becomes higher than the preset lux level.

2. Dusk/Dawn function

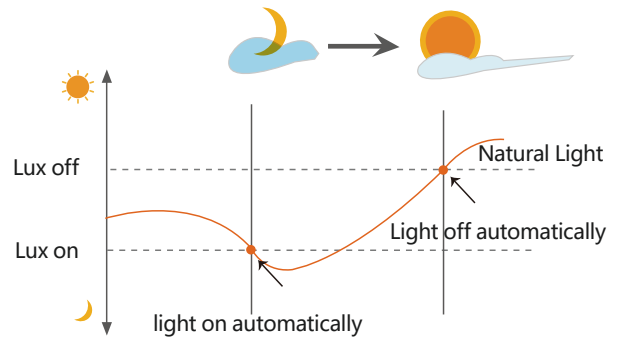
The sensor is able to differentiate artificial light brightness from natural light after installed inside the fixture, and automatically turn off light when ambient brightness exceeds preset lux level.

Please follow below setting steps to perform this function:

1. STANDBY DIM LEVEL as any of 10% 20% 30%
2. STANDBY PERIOD as infinite
3. DAYLIGHT as any of 50Lux - 2000Lux (Adjustment Range 50Lux).



HSE WISE APP Control



3. With Dusk/Dawn function



With insufficient ambient brightness, sensor turns on light and keeps it at standby dimming level even if there is no motion or presence.

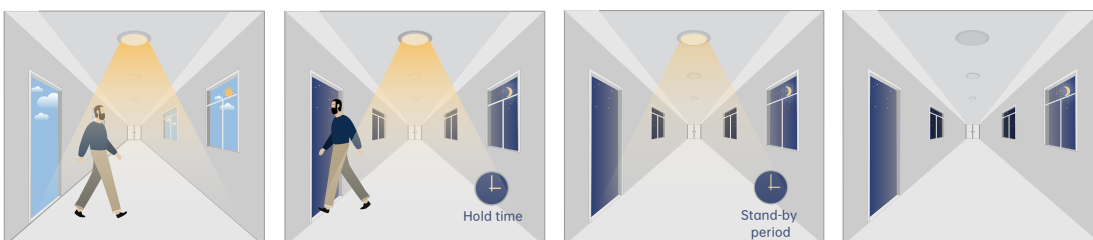
When sensor detects motion or presence it will bring the light level up to 100%.

After motion is no longer detected, fixture remains at 100% for hold time.

After pre-set hold time period it will dim light to standby dimming level again and always keep it.

With sufficient ambient brightness, sensor will turn OFF light automatically.

4. Without daylight disabled



Sensor turns ON light when motion is detected.

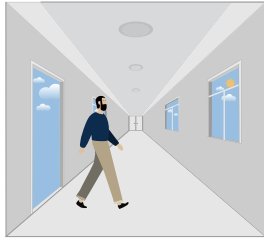
Sensor keeps for a hold time period after motion leaves

Sensor dims light to standby dimming level after hold time if there is still no motion

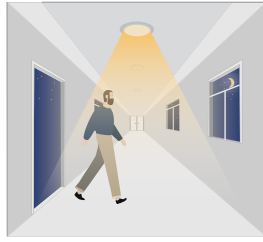
Sensor turns OFF light after standby period



5. With Daylight Threshold



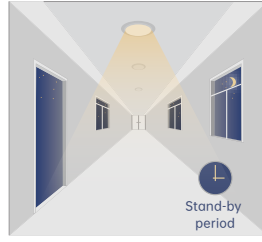
With sufficient daylight, the sensor keeps light OFF even motion gets detected



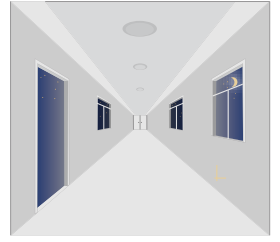
With insufficient daylight, the sensor turns light ON when motion gets detected



After there' s no motion detected, the sensor keeps light ON 100% for holdtime.



After holdtime, sensor dims light to standby dimming level for standby period. if the standby period has been set as 0s, sensor turns light OFF automatically after holdtime.



The sensor turns OFF light automatically after the standby period when there' s no motion detected.

FACTORY SETTING

- | | |
|-------------------------------|------------------------------|
| 1. Motion Sensor: ON | 6. Standby Period: 10min |
| 2. Detection Area: High | 7. Daylight Sensor: OFF |
| 3. Max Dim: 100% | 8. Daylight Threshold: 50Lux |
| 4. Hold Time: 10min | 9. DH: OFF |
| 5. Standby Dimming Level: 20% | |

COMPATIBLE WITH EMERGENCY DRIVERS

1. Compatible with the company's emergency driver and those in the market with DC170V output.
2. Mains power status: The sensor operates normally.
3. Emergency status: The sensor enters emergency mode (ceases operation).

APP DOWNLOAD

