



DESCRIPTION

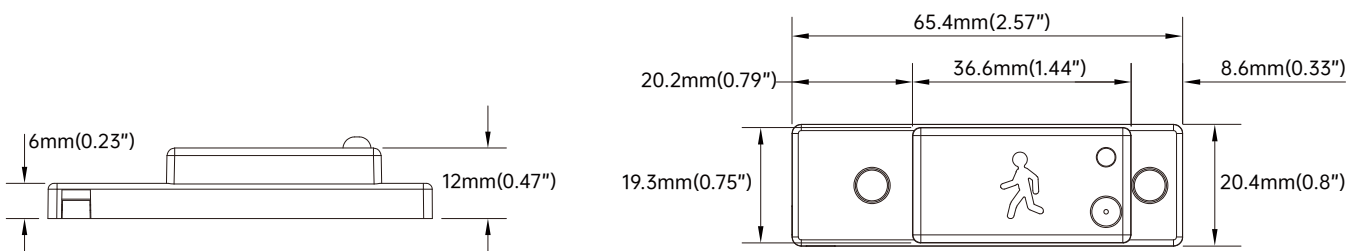
- 12VDC Input with 1-10V dimming
- Bluetooth and regular version available;
- Square module part, with magnet for easy installation
- With quick connector
- Application: Panel, Troffer, Strip, Wrap



SPECIFICATIONS

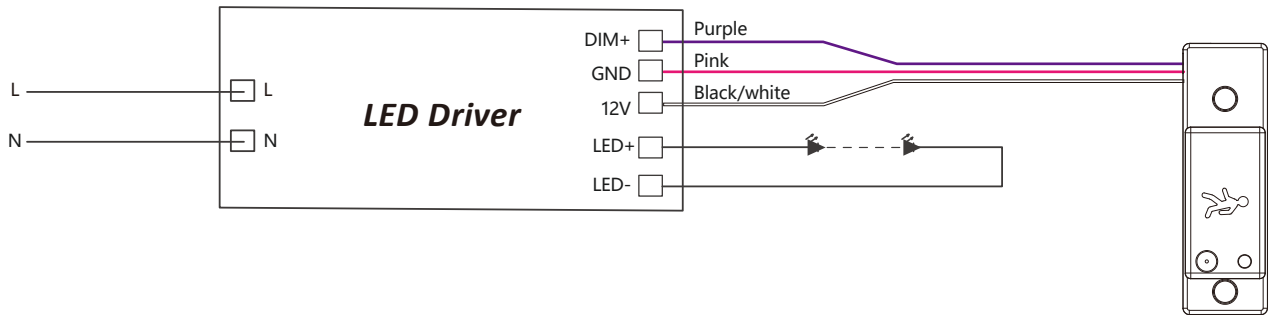
Input Voltage	10.5-15V DC (Supply Current >50mA)
Input Current	<40mA
Stand-by Power	DC10.5V@<0.5W
Control Method	0-10V DIM
Frequency	5.8GHz±75MHz
Microwave Power	<0.3mW
Detection Angle	30-150° (Without Glass Cover)
Mounting Height	≤4m/13ft Ceiling Mounted
Detection Range	Radius: 3-7m 9.84-22.97ft
Control Device	HSE WISE APP
Bluetooth Transmit	25m 170.60ft
Radio Frequency	2.4GHz (2402~2480MHz)
Bluetooth Version	5.2
Dim level	Min Dim Level : 0% - Max Dim Level : 100%
Detection Area	High / Medium / Low
Max Dim	1%-100% Continuously Adjustable
Hold Time	5s/30s/1 min-120 min (Min Hold Time 5s, Adjustment Range 1 min)
Stanby Dimming Level	1% - 100% (Adjustment Range 1%)
Standby Period	0s/5s/30s/1min to 120min (Adjustment Range 1 min) / ∞
Daylight Threshold	Disable 50Lux - 2000Lux (Adjustment Range 50Lux)
Daylight Harvesting	Function supported, please follow steps in "Performance" part to activate it.
Working Temp	-30°C~+60°C
IP Rating	IP20
Compliance	In accordance with CE ROHS
Warranty	5 year warranty

DIMENSIONS





WIRING

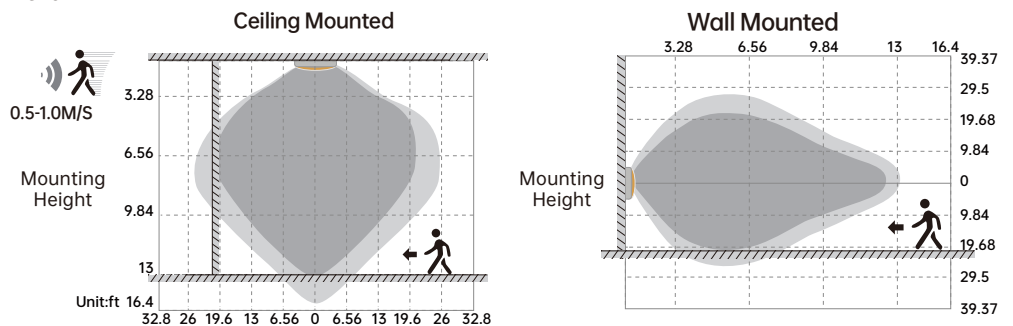


DETECTION COVERAGE

Highest mounting height is 4m/13ft

This figure indicates the maximum distance at the highest mounting height with 100% sensitivity.

- Well Detected Area
- Possibly Detected Area



PERFORMANCE

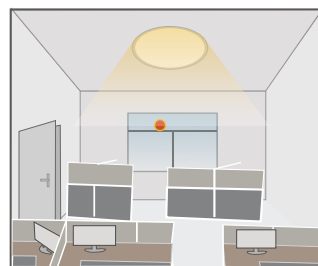
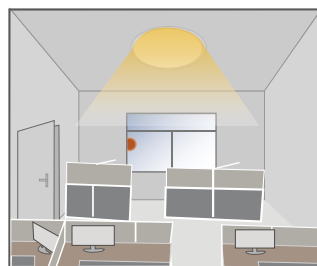
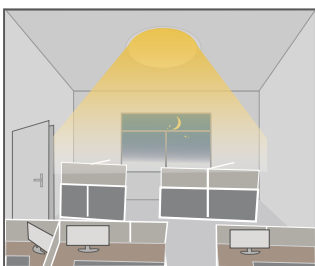
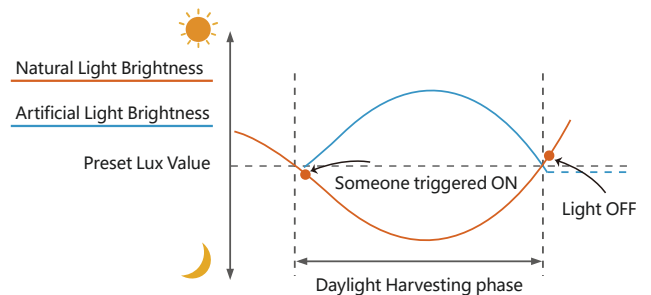
1. Daylight Harvesting

Please follow below setting steps to perform this function:

1. Stay in SENSOR MODE
2. STANDBY PERIOD as 0S
3. DAYLIGHT as any of 50Lux - 2000Lux (Adjustment Range 50Lux).
4. Press DAYLIGHT HARVESTING button to ON



HSE WISE APP Control

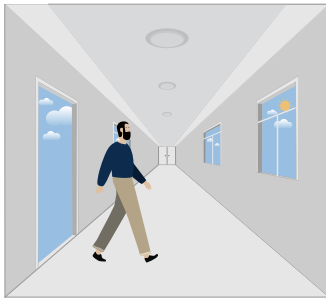


When ambient brightness is lower than preset lux level, Someone triggered ON light and keep dimming according to the change of the ambient brightness; when outside is getting darker, the inside will be brighter, and brighter darker.

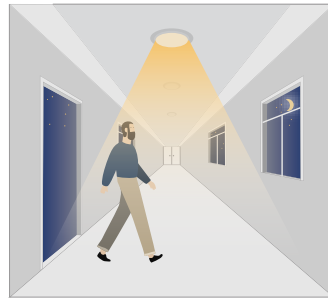
Light OFF when ambient brightness becomes higher than the preset lux level.



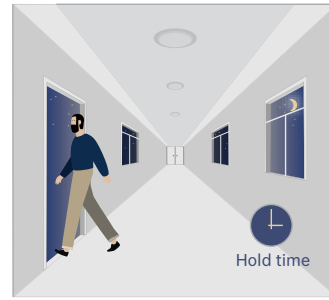
2. Automatically ON/OFF function



With sufficient daylight, even when motion detected, light remains OFF.

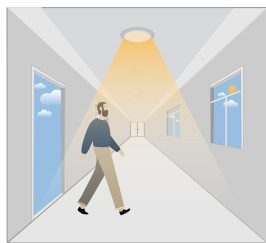


With insufficient daylight, the sensor turns light ON when motion gets detected.

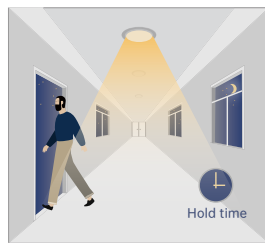


The sensor turns OFF light automatically after the holdtime when there's no motion detected.

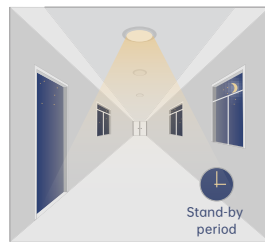
3. Without daylight disabled



Sensor turns ON light when motion is detected.



Sensor keeps for a hold time period after motion leaves

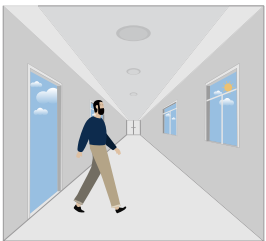


Sensor dims light to standby dimming level after hold time if there is still no motion

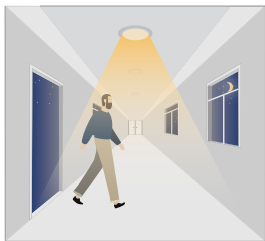


Sensor turns OFF light after standby period

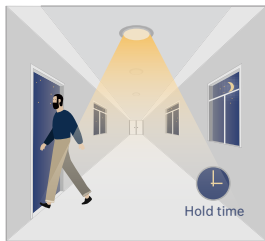
4. With Daylight Threshold



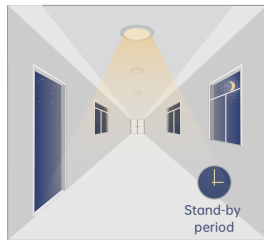
With sufficient daylight, the sensor keeps light OFF even motion gets detected



With insufficient daylight, the sensor turns light ON when motion gets detected



After there' s no motion detected, the sensor keeps light ON 100% for holdtime.



After holdtime, sensor dims light to standby dimming level for standby period. if the standby period has been set as 0s, sensor turns light OFF automatically after holdtime.



The sensor turns OFF light automatically after the standby period when there' s no motion detected.

FACTORY SETTING

- | | |
|-------------------------------|--------------------------------|
| 1. Motion Sensor: ON | 6. Standby Period: 10min |
| 2. Detection Area: High | 7. Daylight Sensor: OFF |
| 3. Max Dim: 100% | 8. Daylight Threshold: Disable |
| 4. Hold Time: 10min | 9. DH: OFF |
| 5. Standby Dimming Level: 20% | |



COMPATIBLE WITH EMERGENCY DRIVERS

1. Compatible with the company's emergency driver and those in the market with DC170V output.
2. Mains power status: The sensor operates normally.
3. Emergency status: The sensor enters emergency mode (ceases operation).

APP DOWNLOAD

