

尺寸: 240\*100mm



# Manual Instruction

## Smart Wall Remote Controller

Model No.: SU-STR-WR02 For G2/G3/G5/G6/G8/G10

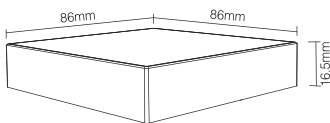
### 1. Features

We adopt a high precision capacitive touch screen IC. Touch screen is very Stable and Sensitive, 2.4GHz high RF wireless control with long distance controlling, low power consumption and high speed transmitting rate. This wall remote widely work on our smart LED Lighting, LED controllers, etc.

### 2. Parameters

Working Voltage: 3V(2\*AAA Battery)  
Standby Power Consumption: 20uA  
Transmitting Power: 6dBm  
Transmission Frequency: 2.4GHz  
Working Temp.: -20~40°C  
Control Distance: 30m  
Size: 86\*86\*16.5mm

**WR02RF Works With:**  
SU-STR24DC-RGB CCT-DR01  
For G2/G3/G5/G6/G8/G10



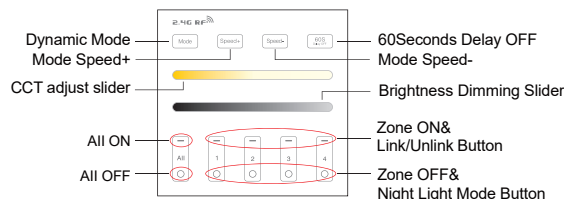
Web:www.suamr.com

Address: 4221 COMBINE RD FLINT, MI 48332 / Network Lighting Control Inc.

### 3. Keys Function

Remark: When touching the button, LED pilot lamp will flash once with different sound. (Touching slider with no sound).

#### WR02RF: 4-Zone DIM&Dual White Wall Remote(Brightness Dimming and CCT Adjust).

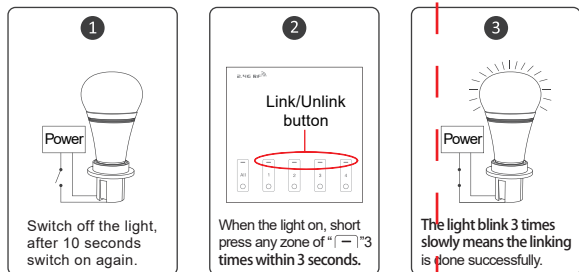


- Touch the slider to adjust color temperature.  
**Note: when you control single color lights, the slider not working.**
- Touch dimming slider to change the brightness.
- ALL ON:** Touch to turn on all linked lights. Long press over 5 seconds to turn ON the pilot sound. (The pilot sound is opened by default).  
**Zone(1-4)ON:** Touch zone ON, turn on zone-linked lights.
- ALL OFF:** Touch to turn off all linked lights. Long press 5 seconds to turn OFF the pilot sound.  
**Zone(1-4)OFF:** Touch zone OFF, turn on zone-linked lights. Long press Zone(1-4) OFF to get the night light mode.

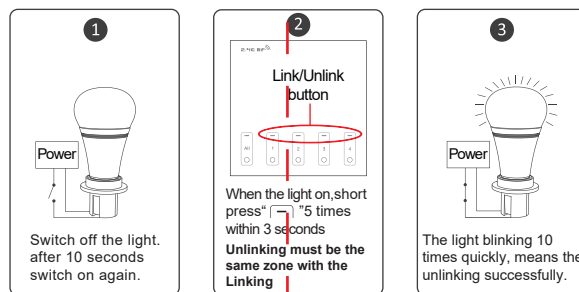
- Mode** Switching dynamic modes.
- Speed+** Accelerate the speed on current dynamic mode. When the light is not on dynamic modes, long press this button to set up "Do not Disturb" function.
- Mode** Switching dynamic modes.
- Speed+** Accelerate the speed on current dynamic mode. When the light is not on dynamic modes, long press this button to set up "Do not Disturb" function.
- Speed-** Slow the speed on current dynamic mode. When the light is not on dynamic modes, long press this button to delete "Do not Disturb" function.
- 60S Delay OFF** When the light is ON, press "60S Delay OFF", the light will be OFF automatically after 60 seconds.  
**Note: When set up "60S Delay OFF" function, the other buttons not working during the 60 seconds; uses can press "60S Delay OFF" button to delete this function, then other buttons can works again.**

### 4. Link / Unlink

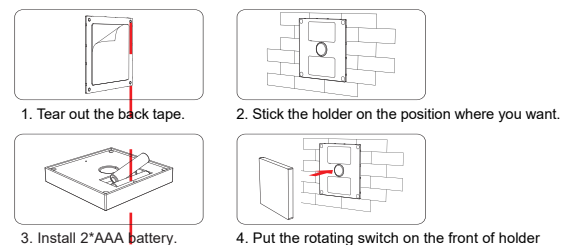
#### 4.1 Linking Instructions



#### 4.2 Unlinking Instructions

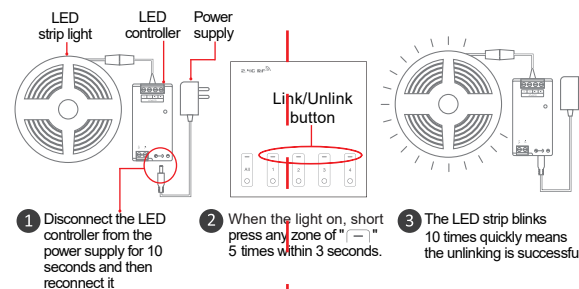
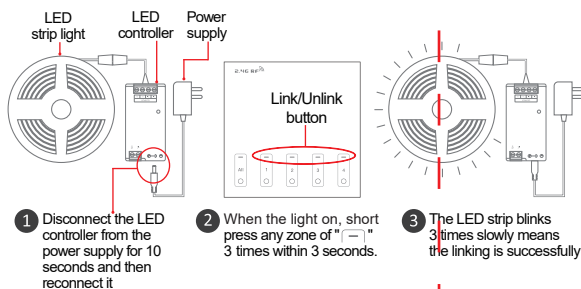


### 5. Installation



### 6. Attention

Please do not use lighting fixtures around the mental area and high magnetic field, otherwise, it will badly affect the control distance.



⚠ If the light not blink slowly, the linking failed, pls switch off the light again, and follow the above steps again.  
When the LED strip is on, please expand it, don't roll up

⚠ If the light not blink quickly, the unlink failed, pls switch off the light again, and follow the above steps to unlink again.



Made in China